



Regulatory update ICA compliance scheme

How can we sell produce if we lose
dimethoate and fenthion?

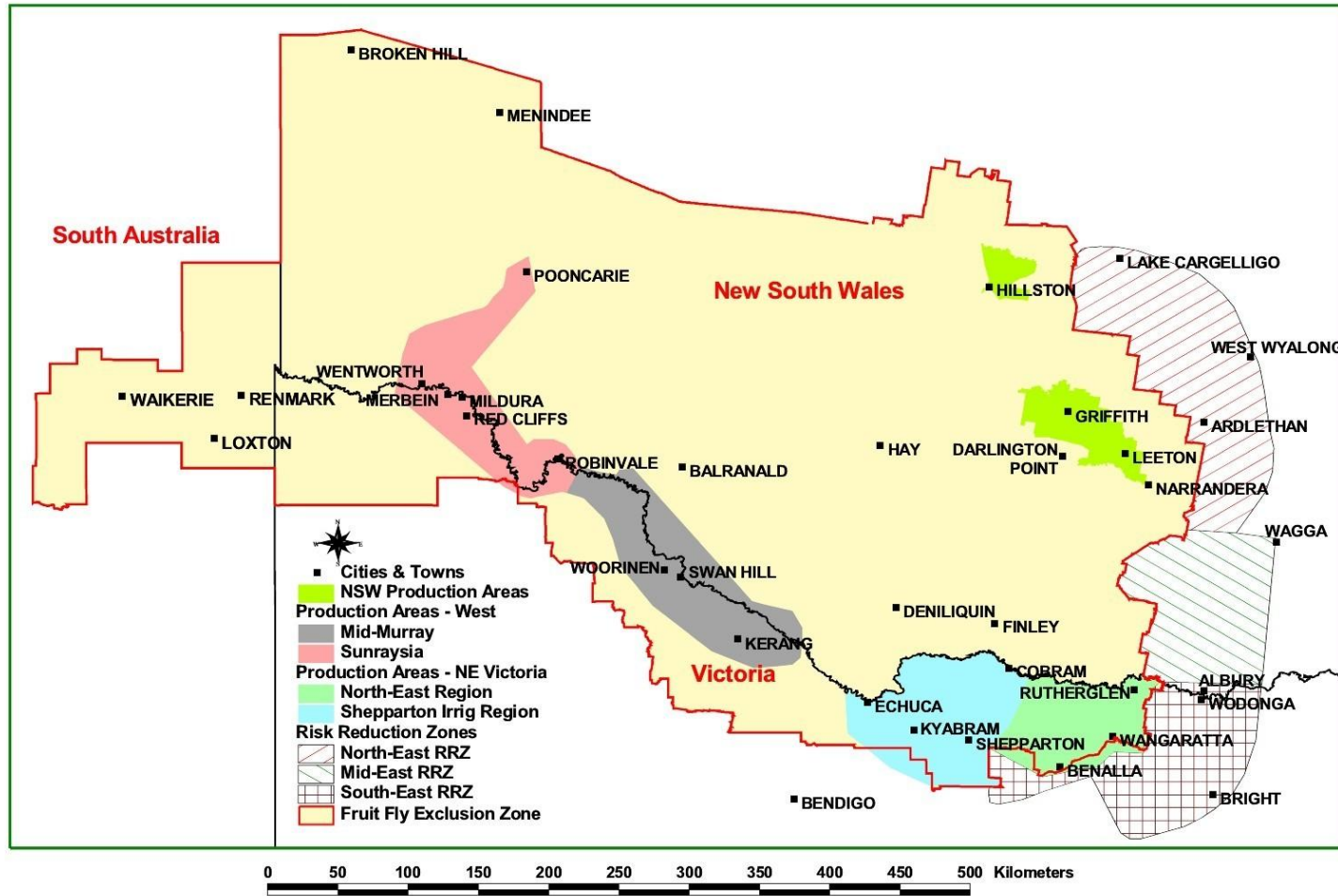
- **Topics**
- ICA – definitions
- Fruit Fly Exclusion Zone
- Standard fruit fly management strategies
- Science of fruit fly management
- ICA 28 – citrus from Queensland into Victoria
- ISPM
- Where to from here?

What is an ICA?

- ICA = Interstate Certification Assurance
- A system of **Certification Assurance** developed to meet the requirements of State and Territory governments for the certification of produce for **quarantine** purposes
- Fruit flies, fire ants, citrus canker, black sigatoka in bananas, any quarantine concern
- Once an ICA is accepted, it becomes voluntary **arrangement** between I&I NSW and a business that demonstrates effective in-house quality management ...that produce meets the specified requirements
- Key words are “**assurance**” and “**arrangement**”

Fruit Fly Exclusion Zone – where is it?

South Western New South Wales & Northern Victoria
showing Fruit Fly Exclusion Zone, Production Zones and Risk Reduction Zones



What are the standard fruit fly management strategies??

- **Isolation** (distance, lack of trees)
- **Climatic support** (too cold – too dry?)
- **Exclusion of the pest** (roadblocks, buffer zones, ICAs)
- **Public awareness** (most people want to do the right thing)
- **Monitoring** (indicators of population)
- **Pre harvest controls** (bait and cover sprays, sterile technique)
- **Post harvest treatments** (pesticide dipping, cold treatment, inspection, modified atmospheres)

Fruit Fly Exclusion Zone – what do we use?

- Geographic isolation (pastures) ✓ ✓ ✓ ✓ ✓
- Climate (southern fringe of range) ✓ ✓ ✓ ✓ ✓
- Exclusion – ICA commercial produce ✓ ✓ ✓
- Exclusion – roadblocks (40 Days) ✓ ✓
- Exclusion – fines for fruit transport ✓
- Public awareness – industry funded ✓ ✓
- Monitoring – ✓ ✓ ✓
- Pre-harvest control – not allowed ✗
- Post harvest control – after outbreak ✓

Strategies are based on scientific merit

- Fruit flies are :-
 - drawn to tree shaped objects (lolly-pop look)
 - Qfly attracted to yellow and blue (=green)
 - Indications that flies probably migrate down slope
 - 98% of flies travel >600m from the point of emergence
 - Think they can “see” heat (infrared vision)
 - on-the-wing are 17°C
 - Flies tend not to move above 33°C
 - mate at dusk
 - Females prefer to lay eggs in broken skin

Strategies are based on scientific merit

- Fruit flies :-
 - Survive only 2-4 days without food and water
 - search for food before midday
 - Summer spray oils seem to have repellent effect
 - X2 flies are drawn to green shade mesh compared to white mesh
 - Strong indications spinosad is not as long lived as malathion bait sprays (IPM – what to do?)
 - Public awareness - 97% of travellers do the right thing if they know what it is
 - 96% of travellers remember road signs

ICA 28 – example of what can be done

- ICA-28 Preharvest bait spraying and inspection of citrus
- Central Burnett in Queensland
- Winter window – 1 March to 25 August into Victoria
- All cultivars of mandarins, oranges, limes, grapefruit, tangors and eureka lemons
- Fruit fly population monitored by an independent body (consultant)
- All trees within 400 m of a Lynfield cue lure trap
- 12 weeks of pre harvest bait spray
- Sampling and inspection of 600 fruit per load
- Records – transparency – must be audited

ISPM – becoming used in trade

- ISPM = International Standards for Phytosanitary Measures
- No 30, 22 - Areas of low pest prevalence
- No 30 - Places of pest free production
- No 31 – Methods of sampling consignments
- No 14 – Systems approach to pest management
- Better chance of acceptance if aligned with an ISPM

Where to from here?

- As with the loss of DDT and EDB, the possible loss of DF use patterns will be a significant event
- Strongly suspect domestic trade will be done differently in 2 - 5 years
- **Chance to prepare** for the likely change
- Need for research to find your “ICA-28”
- Federal and State governments here to assist
- APVMA trying to get the best outcome
- Industry bodies here to assist and guide outcomes

Thank you for listening

- Questions

